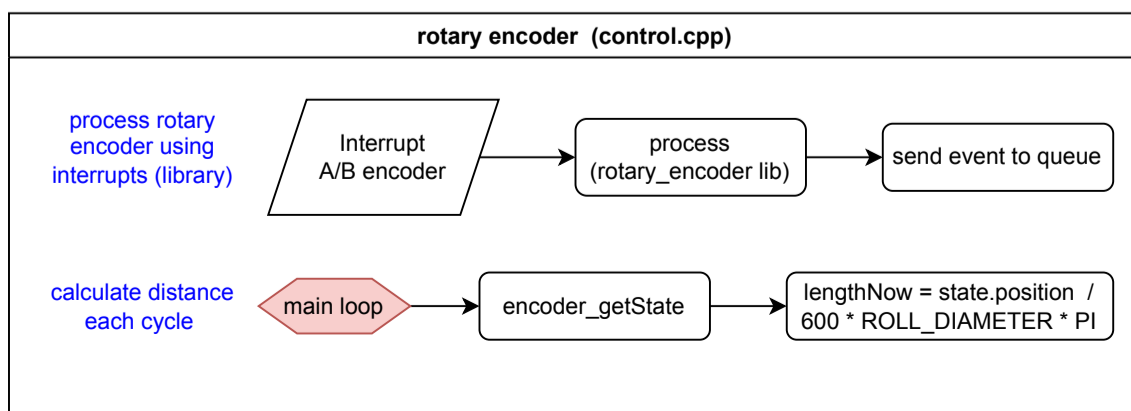
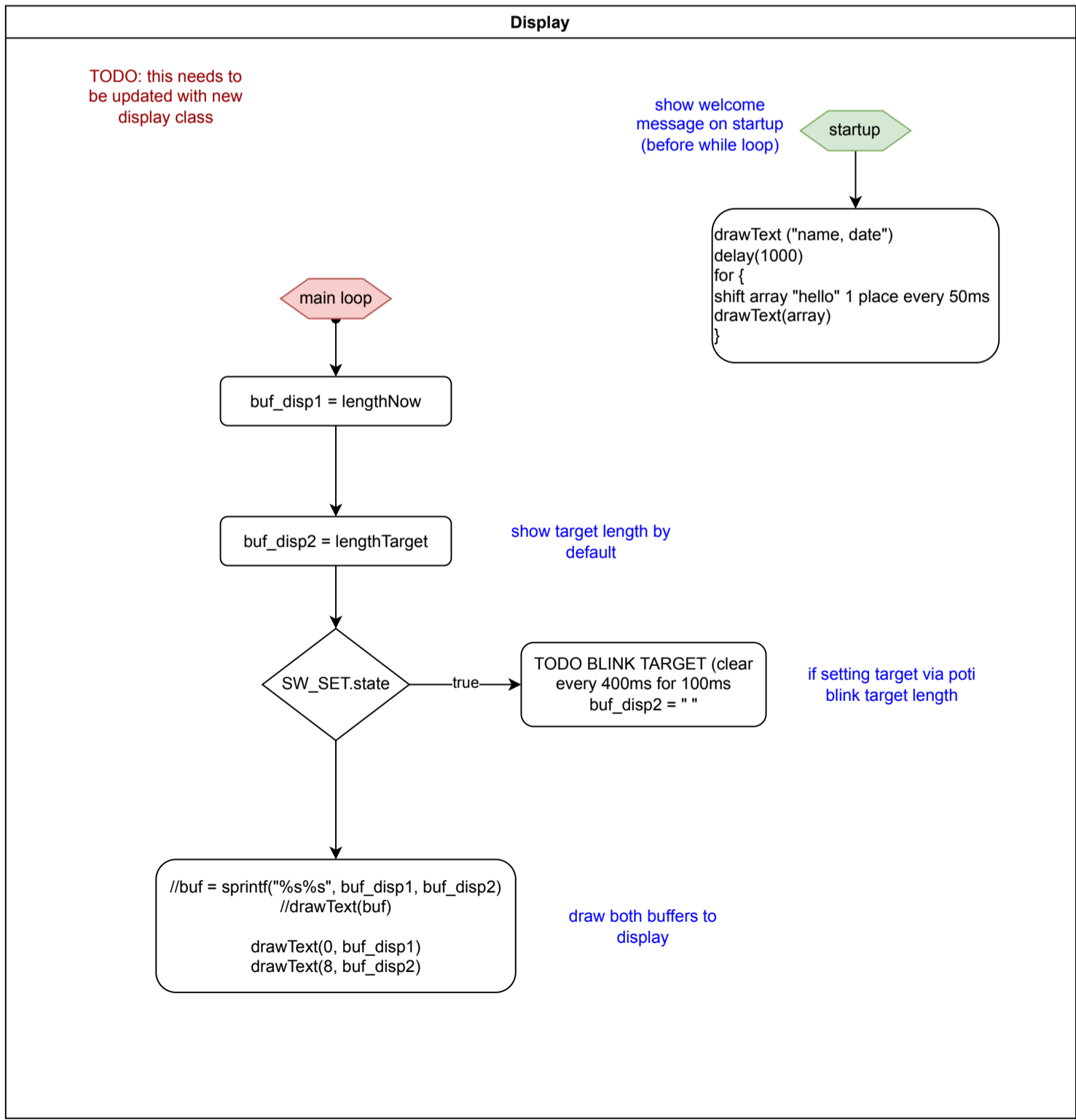
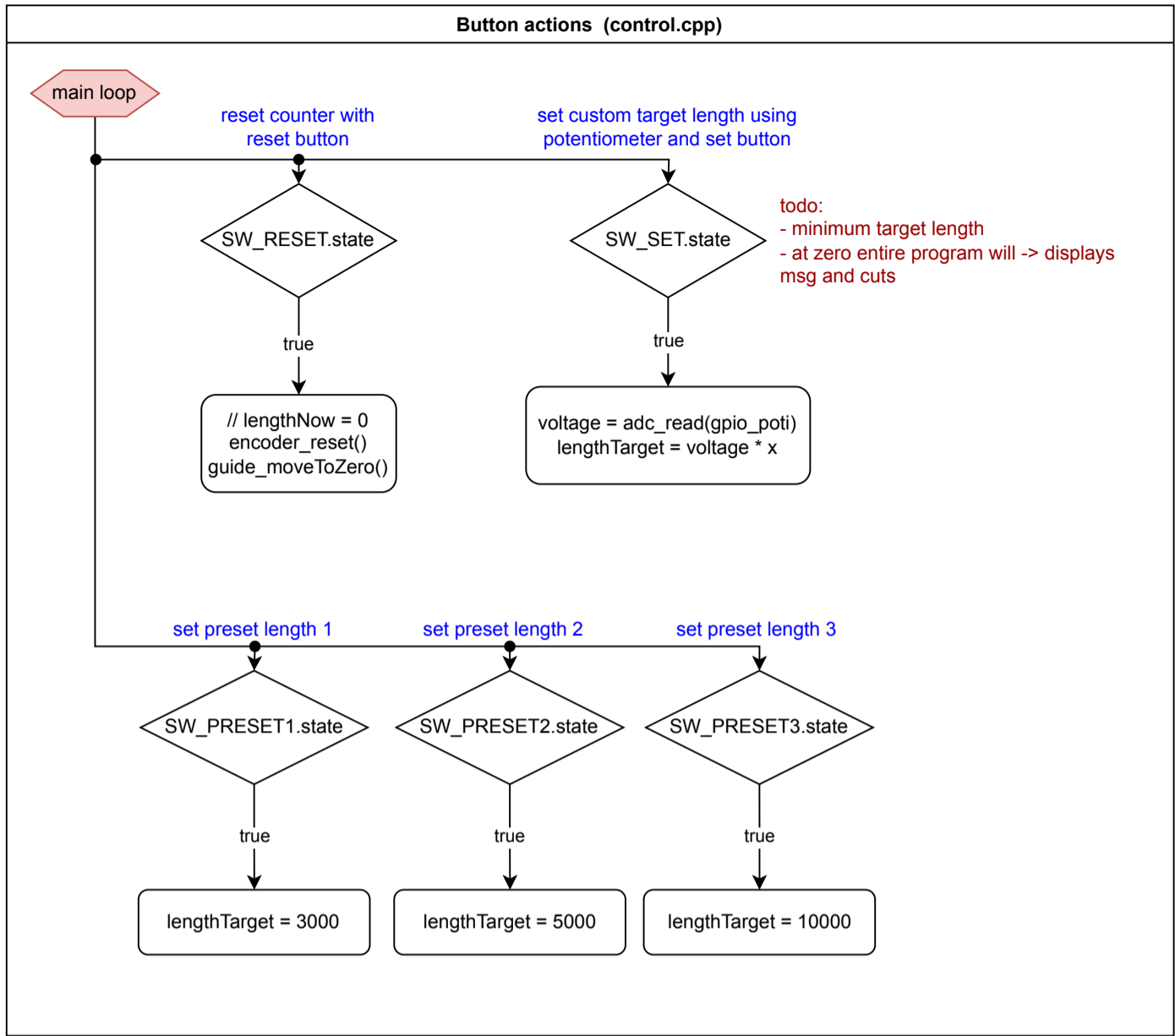


- Features/Ideas - List:
- slow down when close to target
  - stop when no movement recognized
  - manual reverse control? e.g. unwind again

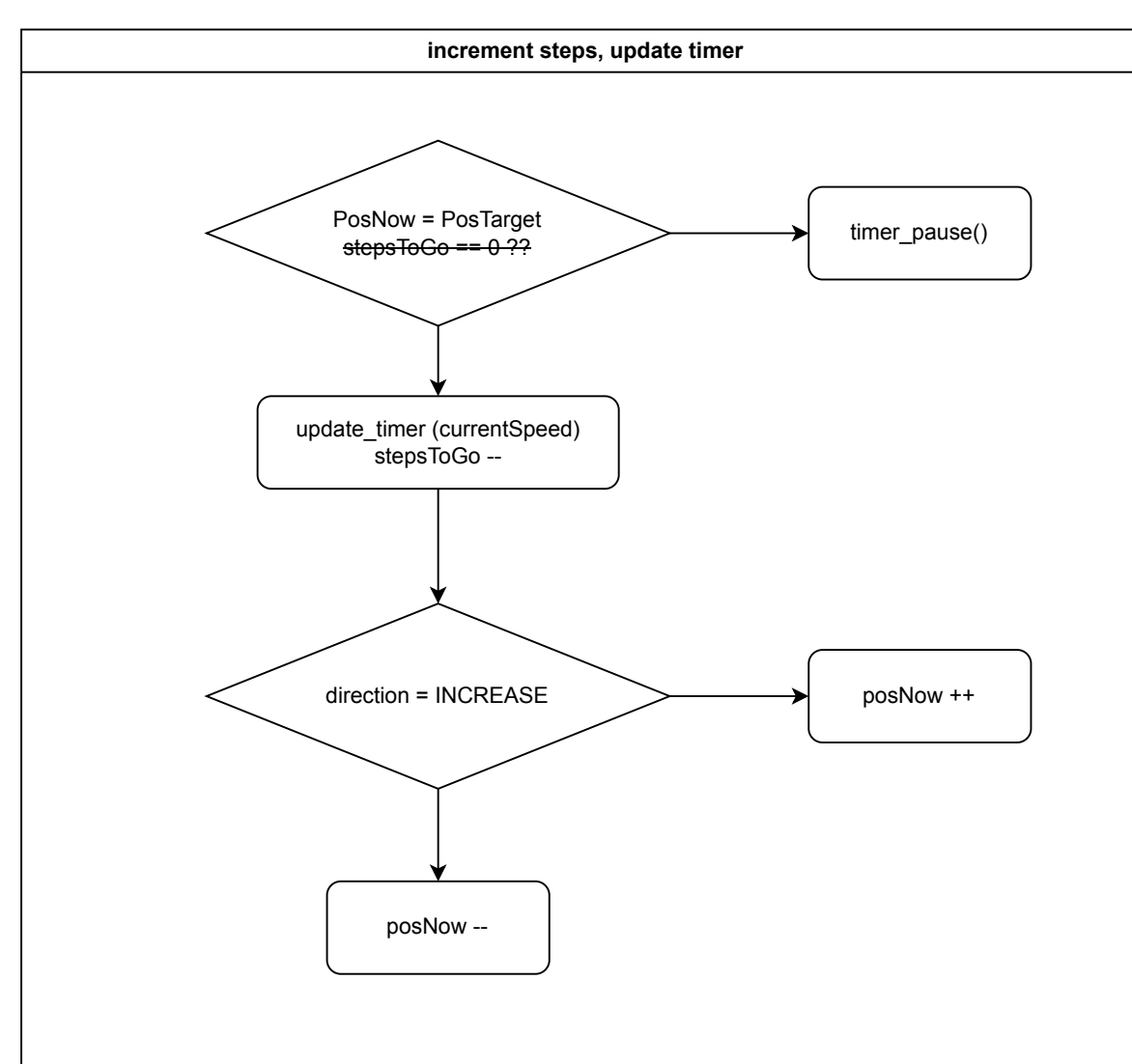
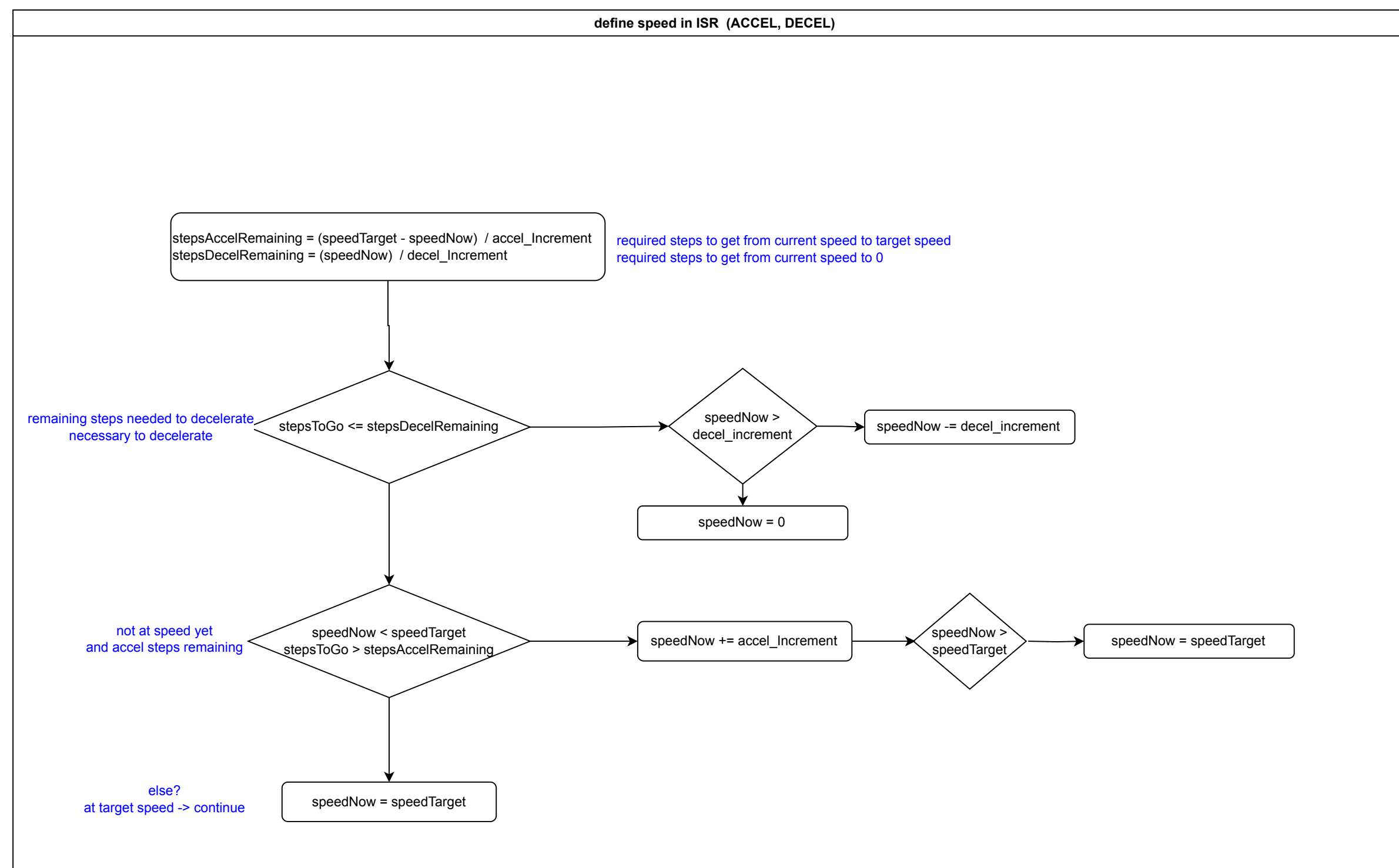
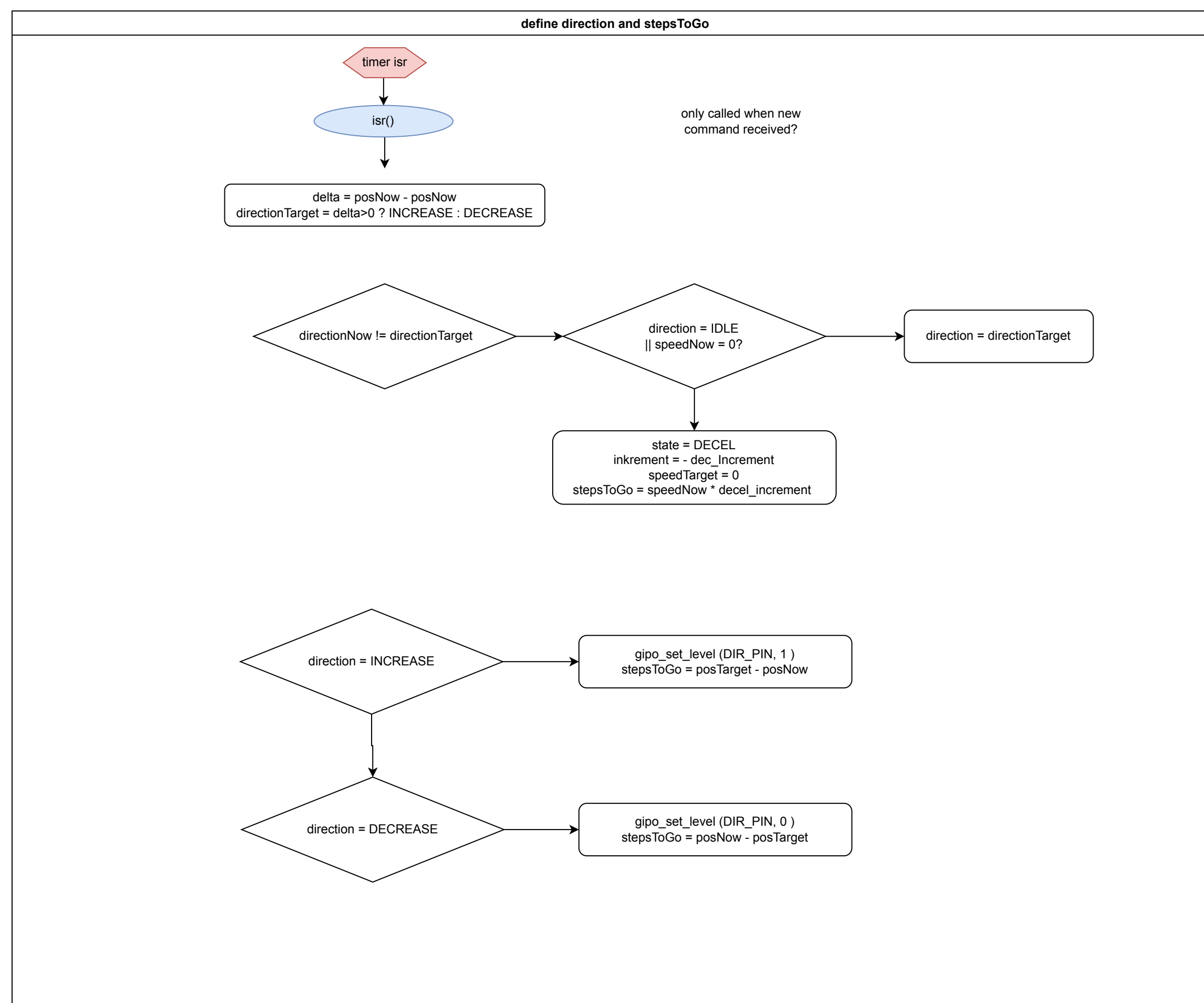


Input
- Button Start
- Button Reset
- Button Set
- Potentiometer
- Preset 1-3

Output
- 2x 8 digit 7-segment display
- buzzer
- VFD
- D0 - D2
- FWD
- REV
- Control lamp







delta = pc  
stepsTo

TARGET REACHED

step

ACCELERATING

speedTa

DECELERATING

speedTa

COASTING / at speed

speedNo

